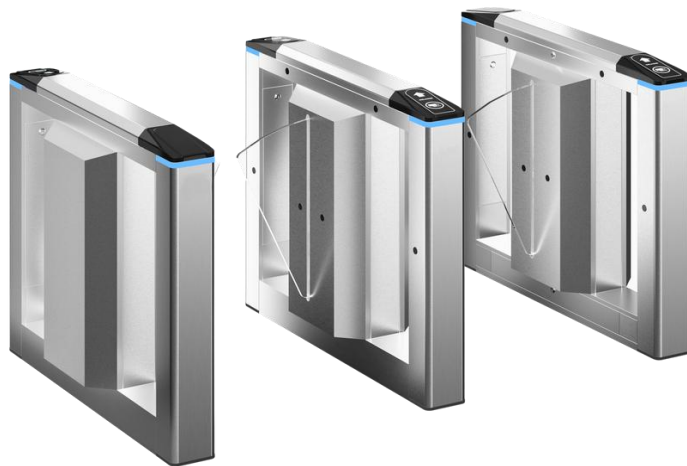




Hợp tác để thành công

FLAP BARRIER

TAK313



Technical Parameter

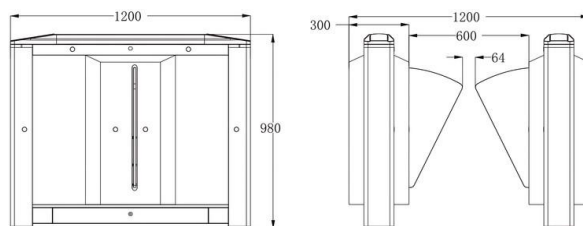
Power supply	AC110~220V / 50~60Hz
Motor power consumption	24V BLDC 40W
Passage width	≤600mm
Arm Length	268mm
Open/Close time	0.8s
Passing speed	35~50 Persons/min
Infrared	6 Pairs
Dimension	1200*300*980mm
Housing material	SUS304 Stainless steel
Working temperature	-25° to 75°
Arm Turning	Bi-directional
Working environment	Indoors or Outdoors
Communication interface	RS485, TTL232

» Customized Colors

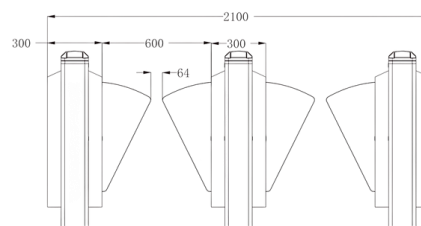


» Dimension

- Passage width default is 600mm



Single Channel



Dual Channel

» Main Function

- Arm Turning: Bi-directional
- When power is off, the arm opens automatically. When power is restored, the arm will automatically hold its position.
- After a valid card is read and the passenger passes through, the arm can be delayed in closing for 1-60 seconds, which can be set via the control panel.
- Auto-reposition function: After a card is read, if the passenger does not pass within the specified time, the turnstile will automatically cancel the order. The regulated time can be set by managers.
- Anti-rush function: If no open signal is received, the arm will remain tightly closed.
- Runs stable with little noise.